



# KeySecure

# KeySecure

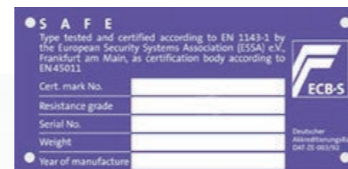
KeySecure Limited was formed over 25 years ago.

There is expertise within the company covering more than 75 years experience in the security industry, working closely with insurance companies and various industry standard bodies and manufacturers to ensure the highest quality of product is made available. Specification sheets on all products are available. Full technical support is available at Dursley. Distributing nationwide, KeySecure are committed to a quality of service and product which exceeds expectation. We specialise in key security systems, safes, padlocks, safety mirrors, cash/deed boxes, lockout systems and other ancillary security products specified by numerous bodies including government departments. Through manufacturing we also provide bespoke work and specials to satisfy our customer requirements.

Cash Ratings shown in this price list should be taken as a guide only.  
Installations, siting, domestic, commercial and alarmed premises are factors that are taken into account and therefore ratings may be higher or lower.

Page 4	Key Security Systems - Alternative Locking Mechanisms
Page 5	Key Security Systems - Mobile, Deep, Clear Fronted and Padlock
Page 6	Key Security Systems - Extra Key, Deep, Padlock and High Capacity
Page 7	Key Security Systems - Special Applications and Contract Range
Page 8	Key Security Systems - Special Security and High Capacity
Page 9	Key Security Systems - Emergency Cabinets and Key Safes
Page 10	Key Security Systems - Mechanical Key Control
Page 11	Replica CCTV Cameras
Page 12	Security / Safety Mirrors
Page 13	Stainless Steel Mirrors
Page 14	Safes - S2
Page 15	Safes - Eurograde 1
Page 16	Safes - Eurograde 2
Page 17	Safes - Eurograde 3
Page 18	Safes - Underfloor
Page 19	Safes - Cupboard, Floorboard, Deed, Document and Cash Boxes
Page 20	Master Lock - Pro Series and Combination Locks
Page 21	Master Lock - Laminated Rekeyable, Brass and Hasps
Page 22	Master Lock - Specials, Key Storage, Chains, Cables and Locker Locks
Page 23	Master Lock - Excell and Key Blanks
Page 24	Safety Lockout - Padlocks, Hasps and Tags
Page 25	Safety Lockout - Electrical and Ball Valve
Page 26	Safety Lockout - Lockout Stations - Padlock Storage

Our high security safes are tested to the latest European standards and carry the appropriate certification where necessary.



ECB.S



Coloured adjustable hook bars with numbered strips which can be repositioned to suit difficult sizes of key.  
Strong Cylinder lock supplied with two keys  
Numerous alternative locking mechanisms available including a changeable combination lock offering 1 million different opening combinations.  
Index removed when cabinet is unattended making key identification/location impossible (not KS20).  
Colour coded numbered key tags to suit hookbars.  
Each key is numbered to ensure no unauthorised person can identify its location or use.  
Durable powder coated finish.  
Pre-drilled fixing holes for wall mounting.

Carriage Charges - UK Mainland only.  
Carriage will be charged on all orders under £180 net, excluding VAT.  
Excluding free standing safes and free standing key cabinets  
Other delivery terms by agreement.  
Full terms and conditions are available on request.  
All weights and dimensions are approximate E & EO.  
All prices subject to VAT

# KeySecure

## KEY SECURITY SYSTEMS

KeySecure cabinets provide effective key control and security.  
Secure key control is a must to maintain the security of any building, vehicle or area.  
KeySecure Security Cabinets provide a simple and effective control over movements and whereabouts of keys.



KS50 Combination



KS100 MD



KS100



KS400

### KEY CONTROL SYSTEMS

*Ideal for storage and accountability of single keys giving quick positive identification*

KS20	20 keys	255mm (H)	x	225mm (W)	x	80mm (D)	2kg
KS30	30 keys	310mm	x	225mm	x	80mm	3kg
KS50	50 keys	350mm	x	380mm	x	80mm	5kg
KS80	80 keys	450mm	x	380mm	x	80mm	7kg
KS100	100 keys	550mm	x	380mm	x	80mm	10kg
KS150	150 keys	550mm	x	380mm	x	140mm	14kg
KS200	200 keys	550mm	x	380mm	x	140mm	15kg
KS250	250 keys	550mm	x	380mm	x	205mm	18kg
KS300	300 keys	550mm	x	380mm	x	205mm	19kg
KS400	400 keys	550mm	x	730mm	x	140mm	25kg
KS500	500 keys	550mm	x	730mm	x	205mm	34kg
KS600	600 keys	550mm	x	730mm	x	205mm	36kg

**KEY LOCATION CARDS** - to be used when a key or keys are issued until returned ensuring control and check of each key within the system at all times.

- Location Cards x 250
- Location Cards x 500
- Location Cards x 1000

**KEY TAGS** - Long or short, please specify

- Key Tags x 20
- Key Tags x 50
- Key Tags x 100
- Key Tags x 200



### ALTERNATIVE LOCKING MECHANISMS

Mechanical Combination - 1 million differs

Electronic Combination Lock

Electronic Cam Lock

Mechanical Digital Lock - offering 8000 different combinations

Mechanical Digital Lock - with key override - offering 8000 different combinations

Electronic Slam Shut Lock - with key override

Electronic Slam Shut Smart Audit Lock

Euro Lock Housing

Padlockable Cam Lock (padlock not included)

2 Cam Locks - key to differ



ELECTRONIC LOCKING



PADLOCKABLE CAM LOCK



MECHANICAL DIGITAL



MECHANICAL DIGITAL WITH KEY OVERRIDE



EURO LOCK



ELECTRONIC SLAM SHUT LOCK



ELECTRONIC CAM LOCK



ELECTRONIC SMART AUDIT LOCK

# KeySecure

## KEY SECURITY SYSTEMS



KS30 Mobile



KS100 Deep



KS50 Clear Fronted



KS50 Padlock

### MOBILE SYSTEMS - complete with carrying handle

KS20 Mobile	20 keys	255mm (H)	x	225mm (W)	x	80mm (D)	2kgs
KS30 Mobile	30 keys	310mm	x	225mm	x	80mm	3kgs
KS50 Mobile	50 keys	350mm	x	380mm	x	80mm	5kgs

### DEEP SYSTEMS - constructed to house bunches of keys; ideal for estate agents and the motor trade

KS50 DEEP	50 keys	350mm	x	380mm	x	140mm	5kgs
KS100 DEEP	100 keys	550mm	x	380mm	x	140mm	10kgs
KS200 DEEP	200 keys	550mm	x	730mm	x	140mm	18kgs

**CLEAR FRONTED** - a range of cabinets with perspex front for use in a controlled environment. Easy visual check of whereabouts of keys.

KS30 VIEW	30 keys	350mm	x	380mm	x	80mm	5kgs
KS40 VIEW	40 keys	450mm	x	380mm	x	80mm	6kgs
KS50 VIEW	50 keys	550mm	x	380mm	x	80mm	8kgs

**PADLOCK SYSTEMS** - designed to meet the requirements of the machine industry by securing the padlocks isolating switchgear and machinery whilst maintenance is carried out. Specially spaced adjustable hook bars.

KS25 PADLOCK	25 Padlocks or Bunches	350mm	x	380mm	x	140mm	5kgs
KS50 PADLOCK	50 Padlocks or Bunches	550mm	x	380mm	x	140mm	10kgs
KS100 PADLOCK	100 Padlocks or Bunches	550mm	x	730mm	x	140mm	18kgs
KS200 PADLOCK	200 Padlocks or Bunches	550mm	x	730mm	x	205mm	27kgs

**PADLOCK VIEW CABINETS** - perspex fronted cabinets designed to meet the requirements of the machine industry by securing the padlocks and keys for isolating switchgear and machinery whilst maintenance is carried out. Specially spaced adjustable hook bars.

KS15P VIEW	15 Padlocks or Bunches	350mm	x	380mm	x	80mm	5kgs
KS20P VIEW	20 Padlocks or Bunches	450mm	x	380mm	x	80mm	6kgs
KS25P VIEW	25 Padlocks or Bunches	550mm	x	380mm	x	80mm	8kgs



KS20 PADLOCK VIEW



KS200 DEEP



KS50 MOBILE

# KeySecure

## KEY SECURITY EXTRA KEY SYSTEMS

Key control is of paramount importance to maintain the security and safety of any building, vehicle or area. Where an increased level of security and control is required KeySecure Extra key cabinets provide an effective control over movements, whereabouts and security of keys and padlocks. Incorporating the features of the KeySecure range of Key Security Cabinets, the KeySecure Extra is manufactured with a 2.5mm body and door. In addition the locking mechanism is operated by a half Euro cylinder enabling the Key Security Cabinet to be upgraded into part of a Master Key System.



**KEYSECURE EXTRA** - 2.5mm body and door with security - half Euro cylinder - where a greater degree of security is required

KSE50	50 Keys	350mm (H)	x	380mm (W)	x	80mm (D)	11kgs
KSE100	100 Keys	550mm	x	380mm	x	80mm	17kgs
KSE200	200 Keys	550mm	x	380mm	x	140mm	24kgs
KSE400	400 Keys	550mm	x	730mm	x	140mm	35kgs
KSE600	600 Keys	550mm	x	730mm	x	205mm	45kgs

**FREE STANDING** - high capacity, extra security key cabinets

KSE1000	1000 Keys	1300mm	x	730mm	x	250mm	110kgs
KSE1500	1500 Keys	1500mm	x	730mm	x	250mm	130kgs

**DEEP SYSTEMS** - constructed to house bunches of keys, ideal for estate agents and the motor trade

KSE50 DEEP	50 Keys	350mm	x	380mm	x	140mm	12kgs
KSE100 DEEP	100 Keys	550mm	x	380mm	x	140mm	18kgs
KSE200 DEEP	200 Keys	550mm	x	730mm	x	140mm	35kgs

**PADLOCK SYSTEMS** - designed to meet the requirements of the machine industry and automotive market where a higher degree of securing bunches and transponder keys is required - specially spaced hook bars to accommodate

KSE25P	25 Padlocks or Bunches	350mm	x	380mm	x	140mm	12kgs
KSE50P	50 Padlocks or Bunches	550mm	x	380mm	x	140mm	18kgs
KSE100P	100 Padlocks or Bunches	550mm	x	730mm	x	140mm	35kgs
KSE300P	300 Padlocks or Bunches	1300mm	x	730mm	x	250mm	110kgs
KSE400P	400 Padlocks or Bunches	1300mm	x	730mm	x	250mm	110kgs
KSE500P	500 Padlocks or Bunches	1500mm	x	730mm	x	250mm	130kgs

**ALTERNATIVE LOCKING**

Mechanical Digital Lock - Offering 8000 different combinations

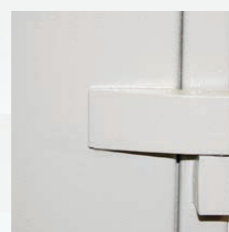
Mechanical Digital Lock - with key override - offering 8000 different combinations

Electronic Slam Shut Lock - with key override

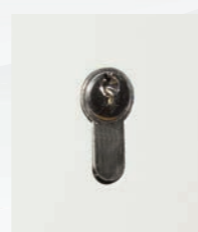
Electronic Slam Shut Smart Audit Lock



KSE EURO HOUSING



KSE1000 HINGE



KSE EURO LOCK

# KeySecure

## SPECIAL APPLICATIONS & CONTRACT RANGE SECURITY CABINETS

KeySecure cabinets provide effective key control and security. Secure key control is a must to maintain the security of any building, vehicle or area. KeySecure Security Cabinets provide a simple and effective control over movements and whereabouts of keys.



KS40AUTOMD

KS50DMDPH

KS70AUTOMD

KS100DMDPH

**AUTOMOTIVE** - a range of KeySecure cabinets with specially spaced hooks offering the flexibility to hold bunches/transponder and single keys in the one cabinet

KS40AUTO	10 Bunches & 30 Single keys	350mm (H)	x	380mm (W)	x	80mm (D)	5kgs
KS50AUTO	20 Bunches & 30 Single keys	450mm	x	380mm	x	80mm	8kgs
KS70AUTO	20 Bunches & 50 Single keys	550mm	x	380mm	x	80mm	11kgs

**SELF CLOSING** - a range of KeySecure cabinets offering a self closing door facility - supplied as standard with high quality slam shut mechanical digital lock, with the option of key override.

KS25PMDPH	25 Bunches/Transponder keys	350mm	x	380mm	x	140mm	6kgs
KS50PMDPH	50 Bunches/Transponder keys	550mm	x	380mm	x	140mm	11kgs
KS50DMDPH	50 Keys	350mm	x	380mm	x	140mm	6kgs
KS100DMDPH	100 Keys	550mm	x	380mm	x	140mm	11kgs

Suitable in Car Dealerships, Garages, Estate Agents for large bunches and Transponder keys. Extra deep cabinets and extra spaced hooks (KS25/50PMDPH) ensures neat and tidy identification.

**FH RANGE** - an economical range of key cabinet designed to be practical and cost effective in keeping keys safe. Supplied complete with colour coded numbered hook bars, key tags and control index (FH48 - 100). Good quality cylinder lock with 2 keys. Sturdy powder coated finish.

FH20	20 Keys	255mm	x	190mm	x	70mm	2kgs
FH30	30 Keys	320mm	x	230mm	x	70mm	3kgs
FH42	42 Keys	320mm	x	230mm	x	70mm	4kgs
FH48	48 Keys	355mm	x	300mm	x	80mm	5kgs
FH64	64 Keys	450mm	x	300mm	x	80mm	6kgs
FH100	100 Keys	550mm	x	380mm	x	80mm	8kgs



FH30



FH48



FH100

# KeySecure

## SPECIAL SECURITY KEY SYSTEMS



FR3000 FREE STANDING



K300 SPECIAL



KS100 SPECIAL SECURITY



FR1500 FREE STANDING

**SPECIAL SECURITY SYSTEMS** - designed to meet the highest level of Key Security. Constructed from 3mm steel with 25mm 3-sided bolt locking operated by a Class 1 (CEN Standard) double bitted eight lever safe lock. It is recommended that the unit is recessed into a wall.

KS60 SPECIAL	60 Keys	436mm (H)	x	460mm (W)	x	120mm (D)	23kgs
KS100 SPECIAL	100 Keys	636mm	x	460mm	x	120mm	32kgs
KS150 SPECIAL	150 Keys	636mm	x	460mm	x	200mm	40kgs
KS200 SPECIAL	200 Keys	636mm	x	460mm	x	200mm	42kgs
KS300 SPECIAL	300 Keys	636mm	x	460mm	x	300mm	52kgs

**FREE STANDING** - large heavy duty and Fire Resistant. Internal panels on telescopic slides for easy access and compact storage.

FR950	950 Keys	1000mm	x	636mm	x	560mm	300kgs
FR1200	1200 Keys	1200mm	x	636mm	x	560mm	305kgs
FR1500	1500 Keys	1200mm	x	636mm	x	560mm	310kgs
FR1950	1950 Keys	1500mm	x	806mm	x	560mm	320kgs
FR2400	2400 Keys	1500mm	x	806mm	x	560mm	325kgs
FR3000	3000 Keys	1800mm	x	806mm	x	560mm	434kgs

### EXTRA KEYS CUT

Key Cabinets (not Specials / Free Standing)

Key Cabinets - Free Standing

Key Cabinets - Special Security

Cash boxes

Master Lock

Safes - DIY

Safes - Free Standing

Safes - Underfloor



KSE50 SMART AUDIT LOCK



KS30 VIEW



KS30 ELECTRONIC CODE LOCK



KS25 MD RED

# KeySecure

## EMERGENCY KEY SYSTEMS & KEY SAFES



KS1LO



KS1



KS1SF



KS2HC



KS5LO

**EMERGENCY KEY SYSTEMS** - designed to house restricted key in case of emergency

KS1	Key Locking	150mm (H)	x	125mm (W)	x	30mm (D)	1kgs
KS1HC	Key Locking, supplied with a hammer & chain	150mm	x	125mm	x	30mm	1kgs
KS1SF	Key Locking, Solid Front	150mm	x	125mm	x	30mm	1kgs
KS2HC	Secured with numbered seal & supplied with hammer & chain	150mm	x	135mm	x	30mm	1kgs
KS1G	Replacement Glass						
KS2S	Seals - Per Pack of 10						
KS1LO	3 Hook, 1 Key Lock, 12 Padlock holes	155mm	x	155mm	x	65mm	2kgs
KS5LO	3 Hook, 5 Key Lock, 12 Padlock holes	255mm	x	155mm	x	65mm	3kgs

**KEY SAFES** - a range of Wall Mounted Key Storage Units for emergency access. Available with both digital and combination opening



5401	Wall mounted - 4 wheel changeable combination	120mm (H)	x	90mm (W)	x	35mm (D)
5403	Extra large Wall mounted - 4 wheel changeable combination	150mm	x	100mm	x	50mm
5415	Wall mounted - Heavy Duty 4 wheel changeable combination	135mm	x	105mm	x	45mm
5425	Light Up 4 wheel changeable combination	126mm	x	72mm	x	52mm
5400	With shackle for portable key storage. 4 wheel changeable combination	105mm	x	90mm	x	35mm
5426	Wall mounted - Extra large, Heavy Duty 14 push button digital lock	173mm	x	103mm	x	75mm
KSC4K	Extra Large, 4 wheel changeable combination, Wall fixings supplied	142mm	x	100mm	x	54mm
KSC3K	Wall mounted - 4 wheel changeable combination. Wall fixings supplied	115mm	x	95mm	x	40mm
KSC2K	12 digit changeable combination, with weather resistant cover	120mm	x	78mm	x	56mm

# KeySecure

## MECHANICAL KEY CONTROL SYSTEMS

With our mechanical key control systems, only authorised users can remove keys that are locked into special mechanical peg board, meaning you can always identify who last removed any missing key.

KeySecure Extra security cabinets are manufactured with a 2.5mm body and door, fitted with a slam shut mechanical digital lock as standard, as well as fixed hooks on the door.



KSE25CONTROL

KSE50CONTROL

KSE100CONTROL

KSE100CONTROL

### KEY CONTROL SYSTEMS

KSE25CONTROL	25 Retention pegs, 10 Access pegs, 10 Fixed Hooks & 25 Anti-tamper wire key seals	310mm (H)	x	550mm (W)	x	210mm (D)	18kgs
KSE50CONTROL	50 Retention pegs, 25 Access pegs, 30 Fixed Hooks & 50 Anti-tamper wire key seals	490mm	x	550mm	x	210mm	28kgs
KSE100CONTROL	100 Retention pegs, 50 Access pegs, 50 Fixed hooks & 100 Anti-tamper wire key seals	850mm	x	550mm	x	210mm	42kgs

### ALTERNATIVE LOCKING

Mechanical Digital Lock - with key override - offering 8000 different combinations

Electronic Slam Shut Lock - with key override

Electronic Slam Shut Smart Audit Lock



KS25 BOARD



KS50 BOARD



KS100 BOARD

### KEY CONTROL BOARDS

KS25BOARD	25 Retention Pegs, 10 Access pegs, 25 Anti-tamper wire key seals	245mm	x	525mm	x	90mm	3kgs
KS50BOARD	50 Retention Pegs, 25 Access pegs, 50 Anti-tamper wire key seals	425mm	x	525mm	x	90mm	4.5kgs
KS100BOARD	100 Retention Pegs, 50 Access pegs, 100 Anti-tamper wire key seals	785mm	x	525mm	x	90mm	8kgs

### ACCESSORIES

Blank Section	Blank section to accommodate larger bunches of keys
Key Seals	Anti-tamper wire key seals 25pcs
Access Pegs	Spare/Replacement access pegs/retention pegs

# KeySecure

## REPLICA CCTV CAMERAS

Deters unwelcome visitors  
Simple cost effective visible deterrent against vandalism and shoplifting  
Offering both indoor and outdoor replica cameras  
Offers an economic alternative to live CCTV surveillance



CD53 - SOLAR POWERED REPLICA

CD420 - PROFESSIONAL REPLICA

CDPTZ

CD50F INFRA RED

### CD53 - SOLAR POWERED REPLICA CAMERA

Indoor/Outdoor

Solar powered flashing LED

Includes 2 x rechargeable AA batteries (which are maintained by the top mounted solar panel)

Two warning signs included

### CD420 - PROFESSIONAL REPLICA CAMERA

Professional external replica camera

Exterior housing contains realistic replica camera inside

Steel construction

Two warning signs included

Measures 330 x 120 x 120mm

### CDPTZ REPLICA PTZ CAMERA

Indoor/Outdoor

Pan, tilt and zoom camera appearance

Complete with flashing LED

Smoked lens

Supplied with CCTV warning sign

### CD50F REPLICA INFRA RED CAMERA

Complete with flashing LED

Realistic video cables

Supplied with CCTV warning sign

### CDDOM - REPLICA DOME CAMERA

Identical to real Pro Dome Camera

Two warning signs included

Visible deterrent

For internal use only

### VKWS - WARNING SIGNS

Signs for use as a deterrent or to comply with the current regulations

White print on blue

Pack of 4 - 2 indoor, 2 outdoor

A4 size



VKWS - WARNING SIGNS



CDDOM - REPLICA DOME

# KeySecure

## SAFETY & SECURITY MIRRORS

KeySecure Security and Safety Mirrors are designed to be used both internally and externally. Preventing accidents is of paramount importance to the industrial safety of personnel and stock. With a wide range of models available to help avoid injury/attack/damage and theft to driveways, shops, receptions, offices, warehouses, car parks, junctions, entrances, the list is endless.



M45 ACRYLIC MIRROR



M60X80 TRAFFIC MIRROR



M60F HEMISPHERICAL MIRROR



M80TP TRAFFIC MIRROR  
HIGH IMPACT ACRYLIC

### ACRYLIC CONVEX

Suitable for all locations where accidental damage is a possibility

M30	300mm round
M45	450mm round
M66	660mm round
M91	910mm round

Supplied with multi-angle joint, wall or pole mounting bracket - please specify

### POLYCARBONATE CONVEX

Suitable for all locations where there is a high risk of deliberate damage  
Polycarbonate has an impact strength 200 times greater than glass.

M45P	450mm round
M66P	660mm round

Supplied with multi-angle joint, wall or pole mounting bracket - please specify

### TRAFFIC CONVEX - ACRYLIC

Eliminates blind spots. Maximum visibility. Red and white attention board surround. Complete with galvanised pipe clip for post mounting.

M60T	600mm round
M60x80T	600mm x 800mm rectangular

### TRAFFIC CONVEX - HIGH IMPACT ACRYLIC

M80TP	800mm round
M60x80T	600mm x 800mm rectangular

Supplied with multi-angle joint, wall or pole mounting bracket - Please specify

### HEMISPHERICAL QUARTER FACE, CORNER FIXING (INTERNAL ONLY)

M60Q	600mm	
M80Q	800mm	

### HALF FACE FOR T JUNCTIONS (INTERNAL ONLY)

M60H	600mm	
M80H	800mm	

### FULL DOME FOR CEILINGS (INTERNAL ONLY)

M60F	600mm	
M80F	800mm	

# KeySecure

## SAFETY & SECURITY MIRRORS - STAINLESS STEEL

High quality mirror finish.  
Ideal for areas with high risk vandalism / damage, industrial atmosphere and extreme conditions.  
Weather resistant protective surround.



M80SS



MTR60X80SS



MTR60SS



M45X60SS CONVEX

### STAINLESS STEEL CONVEX

Suitable for road and traffic safety, industrial and warehouse security, surveillance purposes.  
Stainless steel lenses perfectly polished, virtually unbreakable.  
Orange PVC protective ring, UV resistant.  
Orange sunshade in polycarbonate (round mirrors) or stainless steel (rectangular mirrors).  
Mirrors backed in stainless steel or GI plate  
Easily cleaned, requires minimal maintenance  
Rectangular mirrors provide wider field of view

M32SS	320mm round
M80SS	800mm round - (Green surround - supplied with multi purpose wall/pole bracket)
M45X60SS	600mm x 450mm - (Supplied with pole bracket)

### STAINLESS STEEL TRAFFIC - RED AND WHITE REFLECTIVE SURROUND

Suitable for road and traffic safety, industrial and warehouse security, surveillance purposes.  
Stainless steel lenses perfectly polished, virtually unbreakable.  
Frame and back in ABS plastic, shockproof and UV resistant.  
Easily cleaned, requires minimal maintenance.  
Rectangular mirrors provide wider field of view.  
Supplied with pole bracket

MTR60SS	600mm round
MTR80SS	800mm round
MTR45X60SS	600mm x 450mm
MTR60X80SS	800mm x 600mm

### WALL BRACKET - TO SUIT STAINLESS STEEL MIRRORS

MSS WALL	L Shaped bracket
----------	------------------

# KeySecure

## SAFES - S2

The Invictus range of safes have been manufactured to the highest standards. They have been tested and certified by the leading testing house to EN14450 - S2 giving the a cash cover of £4,000 and £40,000 of valuables cover, in addition they have been approved by the Association of Insurance Surveyors.



SFINV1K



SFINV2K



SFINV2K



SFINV3K

### INVICTUS - S2 - KEY LOCK - £4,000 cash (x10 non cash items) certified to EN14450-S2

	Exterior dimensions (H) x (W) x (D)	Interior dimensions (H) x (W) x (D)	Shelves	Volume (L)	Weight
SFINV1K	220mm x 350mm x 300mm	140mm x 270mm x 190mm	1	7	15kgs
SFINV2K	350mm x 450mm x 350mm	270mm x 365mm x 240mm	1	24	25kgs
SFINV3K	550mm x 450mm x 350mm	470mm x 365mm x 240mm	1	42	35kgs



SFINV1E



SFINV2E



SFINV3E



SFINV3E

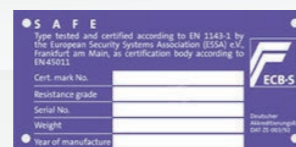
### INVICTUS - S2 - ELECTRONIC LOCK - £4,000 cash (x10 non cash items) certified to EN14450-S2

	Exterior dimensions (H) x (W) x (D)	Interior dimensions (H) x (W) x (D)	Shelves	Volume (L)	Weight
SFINV1E	220mm x 350mm x 300mm	140mm x 270mm x 190mm	1	7	15kgs
SFINV2E	350mm x 450mm x 350mm	270mm x 365mm x 240mm	1	24	25kgs
SFINV3E	550mm x 450mm x 350mm	470mm x 365mm x 240mm	1	42	35kgs

ADDITIONAL SHELVES

### FLAME RETARDANT DOCUMENT WALLET

UL94 Certified and IPX4 Rated for protection against fire, heat, smoke and water



ECB.S

# KeySecure

## SAFES - EURO GRADE 1

The Victor Euro Grade 1 safes have been manufactured, tested and certified to the highest standards by the leading testing house and have been awarded an ECB.S certificate. In addition these safes are recognised and approved for the protection of cash and valuables.



VICTOR 1-2K



VICTOR 1-4K



VICTOR 1-6K



VICTOR 1-6K

### VICTOR - EURO GRADE 1 - KEY LOCK - £10,000 cash (x10 non cash items) certified to EN1143-1.

	Exterior dimensions (H) x (W) x (D)	Interior dimensions (H) x (W) x (D)	Shelves	Volume (L)	Weight
VICTOR 1-1K	400mm x 400mm x 270mm	350mm x 341mm x 157mm	1	18	39kgs
VICTOR 1-2K	400mm x 420mm x 420mm	350mm x 361mm x 307mm	1	36	55kgs
VICTOR 1-3K	500mm x 500mm x 420mm	450mm x 441mm x 307mm	1	60	71kgs
VICTOR 1-4K	650mm x 500mm x 420mm	600mm x 441mm x 307mm	1	81	85kgs
VICTOR 1-5K	800mm x 500mm x 420mm	750mm x 441mm x 307mm	1	101	100kgs
VICTOR 1-6K	1150mm x 500mm x 420mm	1100mm x 441mm x 307mm	2	148	135kgs



VICTOR 1-2E



VICTOR 1-3E



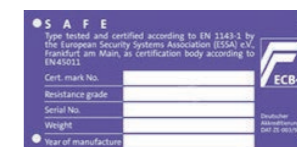
VICTOR 1-5E



VICTOR 1-5E

### VICTOR - EURO GRADE 1 - ELECTRONIC LOCK - (Wittkopp Primor) - £10,000 cash (x10 non cash items) certified to EN1143-1.

	Exterior dimensions (H) x (W) x (D)	Interior dimensions (H) x (W) x (D)	Shelves	Volume (L)	Weight
VICTOR 1-1E	400mm x 400mm x 270mm	350mm x 341mm x 157mm	1	18	39kgs
VICTOR 1-2E	400mm x 420mm x 420mm	350mm x 361mm x 307mm	1	36	55kgs
VICTOR 1-3E	500mm x 500mm x 420mm	450mm x 441mm x 307mm	1	60	71kgs
VICTOR 1-4E	650mm x 500mm x 420mm	600mm x 441mm x 307mm	1	81	85kgs
VICTOR 1-5E	800mm x 500mm x 420mm	750mm x 441mm x 307mm	1	101	100kgs
VICTOR 1-6E	1150mm x 500mm x 420mm	1100mm x 441mm x 307mm	2	148	135kgs



ECB.S



# KeySecure

## SAFES - EURO GRADE 2

The Victor Euro Grade 2 safes have been manufactured, tested and certified to the highest standards by the leading testing house and have been awarded an ECB.S certificate. In addition these safes are recognised and approved for the protection of cash and valuables.



VICTOR 2-1K



VICTOR 2-3K



VICTOR 2-5K



VICTOR 2-6K

**VICTOR - EURO GRADE 2 - KEY LOCK** - £17,500 cash (x10 non cash items) certified to EN1143-1.

	Exterior dimensions (H) x (W) x (D)	Interior dimensions (H) x (W) x (D)	Shelves	Volume (L)	Weight
VICTOR 2-1K	450mm x 450mm x 465mm	350mm x 340mm x 305mm	1	36	109kgs
VICTOR 2-2K	550mm x 550mm x 465mm	450mm x 440mm x 305mm	1	60	145kgs
VICTOR 2-3K	700mm x 550mm x 465mm	600mm x 440mm x 305mm	1	81	173kgs
VICTOR 2-4K	850mm x 550mm x 465mm	750mm x 440mm x 305mm	1	101	201kgs
VICTOR 2-5K	1050mm x 550mm x 465mm	950mm x 440mm 305mm	2	127	240kgs
VICTOR 2-6K	1350mm x 550mm x 465mm	1250mm x 440mm x 305mm	3	168	297kgs



VICTOR 2-2E



VICTOR 2-4E



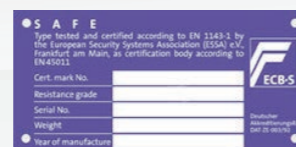
VICTOR 2-6E



VICTOR 2-5E

**VICTOR - EURO GRADE 2 - ELECTRONIC LOCK** (Wittkopp Primor) - £17,500 cash (x10 non cash items) certified to EN1143-1.

	Exterior dimensions (H) x (W) x (D)	Interior dimensions (H) x (W) x (D)	Shelves	Volume (L)	Weight
VICTOR 2-1E	450mm x 450mm x 465mm	350mm x 340mm x 305mm	1	36	109kgs
VICTOR 2-2E	550mm x 550mm x 465mm	450mm x 440mm x 305mm	1	60	145kgs
VICTOR 2-3E	700mm x 550mm x 465mm	600mm x 440mm x 305mm	1	81	173kgs
VICTOR 2-4E	850mm x 550mm x 465mm	750mm x 440mm x 305mm	1	101	201kgs
VICTOR 2-5E	1050mm x 550mm x 465mm	950mm x 440mm 305mm	2	127	240kgs
VICTOR 2-6E	1350mm x 550mm x 465mm	1250mm x 440mm x 305mm	3	168	297kgs



ECB.S

# KeySecure

## SAFES - EURO GRADE 3

The Victor Euro Grade 3 safes have been manufactured, tested and certified to the highest standards by the leading testing house and have been awarded an ECB.S certificate. In addition these safes are recognised and approved for the protection of cash and valuables.



VICTOR 3-1K



VICTOR 3-3K



VICTOR 3-5K



VICTOR 3-6K

**VICTOR - EURO GRADE 3 - KEY LOCK** - £35,000 cash (x10 non cash items) certified to EN1143-1.

	Exterior dimensions (H) x (W) x (D)	Interior dimensions (H) x (W) x (D)	Shelves	Volume (L)	Weight
VICTOR 3-1K	450mm x 450mm x 465mm	350mm x 340mm x 305mm	1	36	177kgs
VICTOR 3-2K	550mm x 550mm x 465mm	450mm x 440mm x 305mm	1	60	239kgs
VICTOR 3-3K	700mm x 550mm x 465mm	600mm x 440mm x 305mm	1	81	287kgs
VICTOR 3-4K	850mm x 550mm x 465mm	750mm x 440mm x 305mm	1	101	335kgs
VICTOR 3-5K	1050mm x 550mm x 465mm	950mm x 440mm 305mm	2	127	401kgs
VICTOR 3-6K	1350mm x 550mm x 465mm	1250mm x 440mm x 305mm	3	168	501kgs



VICTOR 3-1E



VICTOR 3-3E



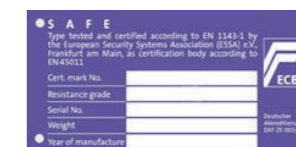
VICTOR 3-5E



VICTOR 3-6E

**VICTOR - EURO GRADE 3 - ELECTRONIC LOCK** (Wittkopp Primor) - £35,000 cash (x10 non cash items) certified to EN1143-1.

	Exterior dimensions (H) x (W) x (D)	Interior dimensions (H) x (W) x (D)	Shelves	Volume (L)	Weight
VICTOR 3-1E	450mm x 450mm x 465mm	350mm x 340mm x 305mm	1	36	177kgs
VICTOR 3-2E	550mm x 550mm x 465mm	450mm x 440mm x 305mm	1	60	239kgs
VICTOR 3-3E	700mm x 550mm x 465mm	600mm x 440mm x 305mm	1	81	287kgs
VICTOR 3-4E	850mm x 550mm x 465mm	750mm x 440mm x 305mm	1	101	335kgs
VICTOR 3-5E	1050mm x 550mm x 465mm	950mm x 440mm 305mm	2	127	401kgs
VICTOR 3-6E	1350mm x 550mm x 465mm	1250mm x 440mm x 305mm	3	168	501kgs



ECB.S

# KeySecure

## SAFES - UNDERFLOOR

A range of underfloor safes offering a wide range of sizes, door, locking devices and security ratings to suit most needs. Designed with the strength and security needed in today's environment at an economical price. Interchangeable doors enabling convenient upgrading where increased security is needed. Deposit facilities available in all ranges giving added flexibility when restricted access is required.



KSFE3D FORTRESS



KSS32 STRONGHOLD



KSVE3D VALIANT



KSVABP SQUARE DOOR

### STRONGHOLD (3000) RANGE

An economical range of square door (200mm) underfloor safes offering a high level of protection to goods and valuables. Secured by 1 fixed and 1 moving bolt with a live AED, operated by a 7 lever safe lock.

KSS31	240mm (H)	x	240mm (W)	x	240mm (D)
KSS32	305mm	x	305mm	x	305mm
KSS32D	305mm	x	305mm	x	305mm (with deposit facility & 10 deposit capsules)

### THE FORTRESS RANGE

A range of round door (160mm) underfloor safes offering a high degree of strength and security at an affordable price.

**FORTRESS (4000)** - An economical round door underfloor safe - with 2 retaining lugs and relocking devices.

KSF1	230mm	x	230mm	x	230mm
KSF2	305mm	x	305mm	x	305mm
KSF3D	305mm	x	305mm	x	305mm (with deposit facility & 10 deposit capsules)

**FORTRESS EXTRA (6000)** - a range of round underfloor safes where a greater degree of security is required, incorporating anti grind protection.

KSFE1	230mm	x	230mm	x	230mm
KSFE2	305mm	x	305mm	x	305mm
KSFE3D	305mm	x	305mm	x	305mm (with deposit facility & 10 deposit capsules)

### THE VALIANT RANGE

A range of square door lift out doors (200mm x 246mm) being able to protect bulky items such as paper files, certificates, jewellery boxes etc. Strength and security with flexibility.

**VALIANT (4000)** - an economical square door underfloor safe with two fixed and two moveable 25mm bolts.

KSV2	305mm	x	305mm	x	305mm
KSV3D	305mm	x	305mm	x	305mm (with deposit facility & 10 deposit capsules)

**VALIANT EXTRA (6000)** - where a greater degree of security is required.

KSVE2	305mm	x	305mm	x	305mm
KSVE3D	305mm	x	305mm	x	305mm (with deposit facility & 10 deposit capsules)

**VALLIANT ABP (10000)** - Top of the range square door underfloor safe offering protection where oxyacetylene cutting equipment may be used.

KSVABP2	305mm	x	305mm	x	305mm
KSVABP3D	305mm	x	305mm	x	305mm (with deposit facility & 10 deposit capsules)

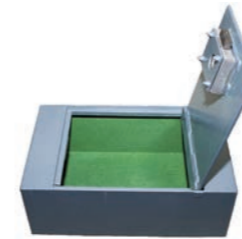
**DEPOSIT CAPSULES** - For use with Valiant, Fortress and Stronghold ranges

# KeySecure

## SAFES DIY - DEED/DOCUMENT & CASH BOXES

### STRONGHOLD RANGE

A robust range of DIY safes and lockable security boxes. Suitable for protecting small amounts of cash and valuables in the home and office.



A4MC CUPBOARD SAFE



DBX2 DEED BOX



DOCU3 DOCUMENT BOX



CB25B CASH BOX

**WALL SAFES** - the brick series is an economical answer to securing small amounts of cash and valuables. Offering good security by means of a 7 lever antipick safe lock

A removable shelf is supplied as standard with the KS4 BRICK

KS2 BRICK	120mm (H)	x	220mm (W)	x	110mm (D)
KS3 BRICK	196mm	x	220mm	x	110mm
KS4 BRICK	295mm	x	220mm	x	110mm (removable shelf standard on KS4)
KS2 ALMS	120mm	x	220mm	x	110mm (with deposit slot)
KS3 ALMS	196mm	x	220mm	x	110mm (with deposit slot)

**STRONGHOLD CUPBOARD** - deadbolt locking

A4MC	228mm (W)	x	340mm (L)	x	130mm (D)
A4MC EXTRA	308mm	x	340mm	x	130mm

**STRONGHOLD FLOORBOARD** - designed to fit between joists, ideal for small valuables such as jewellery, passports etc.

A4FB	228mm (W)	x	385mm (L)	x	130mm (D)
A4FB EXTRA	308mm	x	385mm	x	130mm

**DEED BOX** - designed to hold lever-arch files

DBX2	360mm (L)	x	330mm (W)	x	115mm (D)
DBX4	390mm	x	350mm	x	120mm

**DOCUMENT BOX** - complete with carrying handles, lid support

DOCU1	160mm (L)	x	265mm (W)	x	230mm (D)
DOCU2	205mm	x	355mm	x	270mm
DOCU3	280mm	x	450mm	x	400mm
DOCU4	300mm	x	520mm	x	480mm

**CASH BOX** - robust cash box with removable coin tray and space underneath for notes

CB15GR	Size 1 Cash box - Graphite	150mm (L)	x	110mm (W)	x	80mm (D)
CB20R	Size 2 Cash box - Red	200mm	x	160mm	x	90mm
CB25B	Size 3 Cash box - Blue	250mm	x	180mm	x	90mm
CB30B	Size 4 Cash box - Black	300mm	x	240mm	x	90mm

# KeySecure

## MASTER LOCK - PADLOCKS

Master Lock has manufactured padlocks since 1921. The padlocks include an extensive range of body sizes, shackle lengths, shrouded shackles and keyless combination locking. There is a lock for virtually every need and application. Master Lock's strength is to combine innovation with security and design, bringing together colour and shape to create a secure but distinctive padlock. In addition all Master Lock padlocks have a lifetime guarantee.



6327 PRO SERIES



6230



6125 WEATHER TOUGH



724 HASP



1175 PRO SERIES COMBINATION

### PROSERIES I - 6 pin rekeyable boron shackle BRASS

6830	40mm Solid Brass Hardened Shackle
6830LF	40mm Solid Brass 40mm Hardened Shackle
6840	45mm Solid Brass Boron Shackle
6840LJ	45mm Solid Brass 61mm Boron Shackle
6850	50mm Solid Brass Boron Shackle
6850LJ	50mm Solid Brass 61mm Boron Shackle

All pro series available Keyed Alike

### WEATHER TOUGH - Laminated with Xenoy thermo plastic cover.

6121	55mm Weather Tough Boron Shackle
6121LJ	55mm Weather Tough 61mm Boron Shackle
6125	61mm Weather Tough Boron Shackle
6125LJ	61mm Weather Tough 61mm Boron Shackle
6127	67mm Weather Tough Boron Shackle
6127LH	67mm Weather Tough 48mm Boron Shackle
6127LJ	67mm Weather Tough 61mm Boron Shackle

All Pro Series available Keyed Alike

### CLOSED SHACKLE

Laminated with Xenoy thermo plastic cover.

6321	55mm Closed Shackle Boron Shackle
6325	61mm Closed Shackle Boron Shackle
6327	67mm Closed Shackle Boron Shackle

All Pro Series available Keyed Alike

### SOLID STEEL

6230	64mm Solid Steel Round Body Boron Shackle
6230LH	64mm S/Steel Round Body 51mm Boron Shackle
7030	40mm Solid Steel Boron Shackle
7035	40mm Solid Steel Shrouded Shackle
7040	45mm Solid Steel Boron Shackle
7045	45mm Solid Steel Shrouded Shackle
7050	50mm Solid Steel Boron Shackle

All Pro Series available Keyed Alike

Master Keyed available on request

### PROSERIES II - for knob set cylinders

6627WO	67mm Weather Tough Boron Shackle
6721WO	55mm Weather Tough Boron Shackle
6727WO	67mm Weather Tough Boron Shackle

### PROSERIES RESETTABLE COMBINATION

10,000 differs. 57mm body width

1174	Stainless Steel body 8mm Stainless Shackle
1175	Brass body 10mm Boron Alloy Shackle
1175LH	Brass body 10mm x 53mm Boron Shackle
1177	Brass body 10mm Boron Shrouded Shackle

### COMBINATION LOCKS - HARDENED SHACKLE

1500i	Resettable Movement Combination
1503	48mm Body Round Coloured Dials Fixed
175	51mm Brass 4 Wheel Changeable
175LH	57mm Shackle 4 Wheel Changeable
176	51mm 4 Wheel Changeable Key Override
4603	51mm Body Retractable Cable 3 Digit Fixed
7620	20mm Aluminium 3 Wheel Changeable Combination
7630	30mm Aluminium 3 Wheel Changeable Combination
7640	40mm Aluminium 4 Wheel Changeable Combination
620	20mm Brass 3 Wheel Changeable Combination
630	30mm Brass 3 Wheel Changeable Combination
604	40mm Brass 4 Wheel Changeable Combination

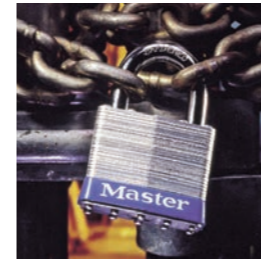
### TSA LOCKS

Airports in the United States, the Transport Security Administration, are allowed to open any luggage (even if they have to damage padlocks) These TSA locks can be unlocked and relocked by the authorities so baggage is always secure.

4680	30mm body width 3mm dia shackle 3 digit resettable combination
4681	2 x 30mm aluminium body width keyed alike 3mm shackle dia, 4 keys
4686T	2 x 30mm body width 3 digit resettable combination

# KeySecure

## MASTER LOCK - PADLOCKS



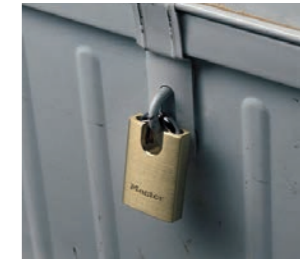
3 LAMINATED



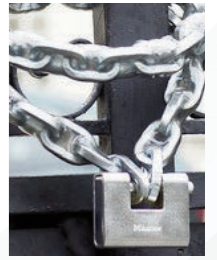
140 BRASS



312 COVERED



2240 SHROUDED BRASS



690 RECTANGULAR

### LAMINATED STEEL - HARDENED SHACKLE

1	44mm Laminated Steel 4 Pin
1LJ	44mm Laminated Steel 64mm Shackle
1LN	44mm Laminated Steel 150mm Shackle
15	64mm L/Steel Boron Shackle 5 Pin
17	51mm L/Steel Boron Shackle 5 Pin
3	40mm Laminated Steel 4 Pin
3LF	40mm Laminated Steel 38mm Shackle
3LH	40mm Laminated Steel 51mm Shackle
3T	2 x 40mm Laminated Steel KA
3KA	40mm Laminated Steel KA
5	51mm Laminated Steel 4 Pin
5KA	51mm Laminated Steel KA
7	30mm Laminated Steel 4 Pin

### UNIVERSAL PIN - 4 PIN

Laminated Padlocks to existing keys.

1UP	44mm Laminated Steel
1UPLJ	45mm Laminated Steel 64mm Shackle
3UP	40mm Laminated Steel
3UPLF	40mm Laminated Steel 38mm Shackle
5UP	51mm Laminated Steel
5UPLF	51mm Laminated Steel 38mm Shackle

Key Alike to existing padlocks for greater convenience

### REKEYABLE PADLOCKS - 5 PIN

101*	83mm Wide 76mm Shackle Clearance
21	45mm Laminated Steel Hardened Shackle
21LF	45mm L/Steel 38mm Hardened Shackle
25	51mm Laminated Steel Boron Shackle
25LJ	51mm L/Steel 64mm Boron Shackle
27LH	51mm L/Steel 51mm Boron Shackle

\*extra wide reach for freezers and other commercial applications

### COVERED - OUTDOOR PROTECTION

Thermal plastic protection to laminated body.

311	40mm Body - Black
312	40mm Body - Blue
312LH	40mm Body - 51mm Shackle
312KA	40mm Body Keyed Alike

### ARMURED PROTECTED RECTANGULAR BODY

Closed hardened steel shackle

680	80mm Shrouded Hardened Shackle
690	90mm Shrouded Hardened Shackle

### SOLID BRASS - HARDENED STEEL SHACKLE

120	20mm Solid Brass 3 Pins
120T	2 x 20mm Solid Brass KA
130	30mm Solid Brass 4 Pins
130T	2 x 30mm Solid Brass KA
130LJ	30mm Solid Brass 64mm Shackle
130Q	4 x 30mm Solid Brass KA
140	40mm Solid Brass 4 Pins
140LF	40mm Solid Brass 38mm Shackle
140LH	40mm Solid Brass 51mm Shackle
140T	2 x 40mm Solid Brass KA
140Q	4 x 40mm Solid Brass KA
9140BLK	40mm Solid Brass Vinyl Cover Black
150	50mm Solid Brass 5 Pins
150LJ	50mm Solid Brass 64mm Shackle
160	60mm Solid Brass 5 Pins
170	70mm Solid Brass 6 Pins
1950	50mm Solid Brass 70-155mm Adjustable Shackle

### SOLID BRASS - KEYED ALIKE

4130KA	30mm Solid Brass 4 pin 5mm dia shackle
4140KA	40mm Solid Brass 4 pin 6mm dia shackle
4140LHKA	40mm Solid Brass 51mm shackle length
4150KA	50mm Solid Brass 5 pin 7mm dia shackle

### SHROUDED SHACKLE

2240	40mm Solid Brass Shrouded Shackle
2250	50mm Solid Brass Shrouded Shackle

### RECTANGULAR BODY

606	63mm Solid Brass 5 Pins
607	76mm Solid Brass 5 Pins
608	85mm Solid Brass 5 Pins

### HASPS

60	Padlock Eyes 13mm Shackle (Pair)
60R	90° Angle Padlock Eyes (Pair)
702	66mm Length 7mm Shackle Dia.
703	91mm Length 9mm Shackle Dia.
704	124mm Length 13mm Shackle Dia.
706	152mm Length 14mm Shackle Dia.
720	159mm Hardened Steel 11mm Shackle Dia.
721	203mm Hardened Steel 13mm Shackle Dia.
722	197mm H/Steel D/Hinge 12mm Shackle Dia.
723	140mm Cast Iron 12mm Shackle Dia.
724	197mm Cast Iron 12mm Shackle Dia.
736	Hasp & Hidden Shackle Lock Pack
770	Enclosed Hasp For Use With 6270 Padlock

# KeySecure

## MASTER LOCK - PADLOCKS



189 TITANIUM



8418 PYTHON LOCKING CABLE



1525 LOCKER LOCK



78 CABLE

### MARINE

639	30mm Body 4 Pin
639LJ	30mm Body 51mm Shackle
639TRI	3 x 30mm Body KA
640	40mm Body 5 Pin
550	50mm Stainless Steel Body Closed Shackle
40	70mm Discus Stainless Steel Body 4 Pin

### SPECIAL APPLICATIONS

1489	Ground Anchor
2750	50mm 'Old English' Zinc Plated

### SELECT ACCESS KEY STORAGE /PROTECTION

5401	Wall Mounted Combination
5403	Extra Large Wall Mounted Combination
5400	Portable / Shackle Key Storage
5404	1 Key Storage (Cylinder)
5412	Wall Mounted Push Button
5415	Wall Mounted Heavy Duty
5425	Wall Mounted light up combination
5426	Wall Mounted Extra Large Heavy Duty

Please see page 9 for more product details.

### SECURITY CHAINS - HARDENED SQUARE LINK - WITH PROTECTIVE VINYL COVER

8011	1000mm Length x 6mm Dia.
8012	1500mm Length x 6mm Dia.
8014	600mm Length x 8mm Dia.
8017	1500mm Length x 8mm Dia.
8019	1000mm Length x 10mm Dia.
8020	1500mm Length x 10mm Dia.

### SECURITY CABLES

65	1830mm x 6mm Self Coiling
78	1800mm x 10mm Steel Looped Cable
72	4500mm x 10mm Braided Steel

### PYTHON - ADJUSTABLE LOCKING CABLE

8433	1800mm x 10mm Dia. Cable & Head
8418	1800mm x 8mm Dia. Cable & Head
8405*	1200mm x 10mm Dia.
8408*	2400mm x 10mm Dia.
8412*	3700mm x 10mm Dia
8430*	9100mm x 10mm Dia.

\* Cable Only

### LOCKER LOCKS\*\*

- Override key for each series

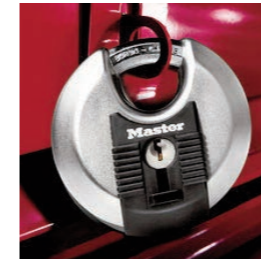
1525	40 Number 3 Digit Dialing Fixed
1630	For Lift Handle Lockers 'R' Hinge
1631	For Lift Handle Lockers 'L' Hinge
1654	Spring Bolt with Pull Handle 'R' Hinge
1655	Spring Bolt with Pull Handle 'L' Hinge
1670	Dead Bolt Locking Manual 'R' Hinge
1671	Dead Bolt Locking Manual 'L' Hinge
1652	Automatic Locking Long Bolt 'R' Hinge
1653	Automatic Locking Long Bolt 'L' Hinge

\*\* There are numerous applications. Please contact for a full programme. Each Series/Order has unique key override manufactured to order in America.

# KeySecure

## MASTER LOCK - PADLOCKS - EXCELL

A range of heavy duty commercial padlocks with patented boron-carbide alloy octagonal shackle chisel resistant, recessed rivets and with double ball bearing locking. Anti-drill protection and reinforced body bumpers for product protection. 'Weather Tough' key cylinder covers provide extreme protection from outside conditions.



M50X DISCUS



M5X LAMINATED



M830LHX SOLID STEEL



M115LFX WEATHER RESISTANT

### LAMINATED STEEL PADLOCK - TITANIUM REINFORCED BODY

M1LFX	45mm body 38mm long octagonal shackle with 8mm diameter
M1TRILHX	3 x 45mm body 51mm octagonal shackle - keyed alike
M1LJX	45mm body 64mm long octagonal shackle with 8mm diameter
M5X	50mm body with 9mm diameter octagonal shackle
M5TX	2 x 50mm body with 9mm diameter octagonal shackle - keyed alike
M5LFX	50mm body 38mm long octagonal shackle with 9mm diameter
M15LFX	64mm body 38mm long octagonal shackle with 11mm diameter with 5 pin cylinder
M1BX	45mm brass finish padlock with 8mm octagonal shackle
M1BLFX	45mm brass finish padlock 38mm long octagonal shackle with 8mm diameter
M1BTX	2 X 45mm brass finish padlock with 8mm octagonal shackle - keyed alike
M5BX	50mm brass finish padlock with 9mm diameter octagonal shackle
M5BLHX	50mm brass finish padlock 51mm long with 9mm diameter octagonal shackle
M5BTRI	3 X 50mm brass finish padlock with 9mm diameter octagonal shackle - keyed alike

### COVERED LAMINATED STEEL PADLOCK - EXTREME WEATHER RESISTANCE WITH ANTI-RUST TREATMENT

M115LFX	45mm body 38mm long octagonal shackle
M115TRILFX	3 x 45mm body 38mm long octagonal shackle - keyed alike
M515LHX	50mm body 51mm long octagonal shackle with 5 pin cylinder

### DISCUS - SHROUDED SHACKLE, COVERED KEYWAY

M40X	70mm body diameter with 10mm octagonal shackle diameter
M40TX	2 x 70mm body diameter with 10mm octagonal shackle diameter - keyed alike
M50X	80mm body diameter with 11mm octagonal shackle diameter

### TITANIUM STAINLESS STEEL BODY COVERED KEYWAY

M187X	60mm body - shrouded shackle 9mm diameter
-------	---

### SOLID STEEL - COVERED KEYWAY

M830LHX	54mm body 51mm octagonal shackle 9mm diameter
M930LHX	64mm body 51mm octagonal shackle 10mm diameter 5 pin cylinder

### RESETTABLE 4 WHEEL COMBINATION - COVERED KEYWAY

M40XNUM	70mm body diameter with 10mm octagonal shackle diameter, 4 wheel resettable combination
M175LFX	50mm body 38mm octagonal shackle 9mm diameter
M175LHX	50mm body 51mm octagonal shackle 9mm diameter

### KEYBLANKS

K1BOX	Box of 50 Pieces for # numbers 1,3,5,312
K7BOX	Box of 50 Pieces for # numbers 7, 90
K15BOX	Box of 50 Pieces for # numbers 15
K17BOX	Box of 50 Pieces for # numbers 17
K27BOX	Box of 50 Pieces for # numbers 21, 25, 27, 31, 220, 230
K120BOX	Box of 50 Pieces for # numbers 120
K130BOX	Box of 50 Pieces for # numbers 130, 140
K150BOX	Box of 50 Pieces for # numbers 150, 160
K170BOX	Box of 50 Pieces for # numbers 170
K7000BOX	Box of 50 Pieces for # numbers Pro Series with 6 Pins Cylinder
K7000NBOX	Box of 50 Pieces for # numbers Pro Series with 6 Pins Cylinder - NICKEL
KM1BOX	Box of 25 Pieces for # M1, M5, M40, M50, M187
KM15BOX	Box of 25 Pieces for # M15, M515, M830, M930

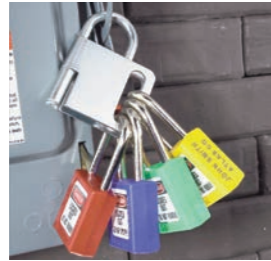
# KeySecure

## SAFETY LOCKOUT PRODUCTS

Each year thousands of preventable accidents occur during the repair and servicing of industrial machinery and equipment. Legislation requires the isolation of power sources during maintenance.



483 GATE VALVE LOCKOUT



418 LOCKOUT HASP



497A LOCKOUT TAG



498A LOCKOUT BOX

### SAFETY LOCKOUT PADLOCKS

Zenex™ - Composite UV stable / chemical resistant body, 6 pin cylinders, 6mm shackle diameter, supplied with one key.

S31	35mm Zenex body width, 48mm body height, 38mm stainless steel shackle
S31KA	35mm Zenex body width, 48mm body height, 38mm stainless steel shackle keyed alike
S31LT	Red 35mm Zenex body width, 48mm body height, 76mm stainless steel shackle
410	38mm Zenex body width, 44mm body height, 38mm hardened steel shackle
411	38mm Zenex body width, 76mm body height, 38mm hardened steel shackle
406	38mm Zenex body width, 44mm body height, 38mm nylon shackle
406KA	38mm Zenex body width, 44mm body height, 38mm nylon shackle keyed alike

8 different colours available, red, yellow, blue, green, black, orange, purple, teal

### LAMINATED STEEL PADLOCK

3	38mm body width, 19mm shackle clearance, 7mm shackle diameter
3LF	38mm body width, 38mm shackle clearance, 7mm shackle diameter
3LH	38mm body width, 51mm shackle clearance, 7mm shackle diameter

Keyed alike extra

6 different colours available, blue, black, green, red, white, yellow

### LOCKOUT HASPS

Lockout by multiple workers. Keeps equipment inoperative while work is in progress.

416	Aluminium 25mm diameter jaws. 6 padlock capacity
420	25mm diameter jaws for 6 padlocks
421	38mm diameter jaws for 6 padlocks
418	Steel body for 4 padlocks
419	Steel body for 8 padlocks
428	Nylon nonconductive hasp for 6 padlocks
427	Aluminium / stainless jaws for 5 padlocks - identification
430	Steel shackle, plastic body for smaller lockout

### LOCKOUT TAGS

Grease and dirt resistant polyester laminate

497A	"DO NOT OPERATE" pack of 12 - 11mm diameter brass grommet for all types of lockout padlocks
4060	Blank tags (warning) x 6. Write your own message, erase and repeat
4202	Do Not Operate (6 tags/pack - meets UK regs)

### GATE VALVE LOCKOUT

For use up to 4 padlocks - withstands chemicals and extreme temperatures -57°C to +177°C.

Centre knockout for rising stem gate valves

480	Fits handwheel cover 25 - 76mm
481	Fits handwheel cover 50 - 127mm
482	Fits handwheel cover 101 - 165mm
483	Fits handwheel cover 152 - 254mm
484	Fits handwheel cover 203 - 303mm

### PRESSURISED VALVE LOCKOUT

3910	Valve cover fits up to 76mm. Fits traditional valves with or without guarding
------	---

# KeySecure

## SAFETY LOCKOUT PRODUCTS

Each year thousands of accidents occur, many of which are preventable, during the repair and servicing of industrial machinery and equipment. Legislation requires the isolation of power sources during maintenance.



498A LOCKOUT BOX



453XL LOCKOUT SACK



488 PLUG



2390 CIRCUIT BREAKER

### BALL VALVE LOCKOUT

Keeps ball valve closed to prevent accidental opening. Heat resistant powder coated steel. Two rows of lockout points for greater accuracy.

3476	Handle - on ball valve lockout for 6.35mm to 25mm diameter valves
3477	Handle - on ball valve lockout for 31mm to 76mm diameter valves
3068	Seal tight handle on ball valve lockout
468L	Seal tight handle off ball valve lockout

### ELECTRICAL LOCKOUT DEVICES

#### CIRCUIT BREAKER - MINIATURE

2390	Standard toggles, black tab, openings -11mm
2391	Wide toggles, red tag, openings +11mm
2392	Standard toggles, black tab, inward pins
2393	Universal circuit breaker

#### GRIP TIGHT™ CIRCUIT BREAKER

491B	For wide or tall breaker toggles
493B	For standard breaker toggles
7C5 RED	Cable shackle for side-by-side breaker, 5mm shackle diameter

#### UNIVERSAL WALL SWITCH LOCKOUT

496B	Lockout both toggle and paddle wall switch
------	--

#### PLUG - SURROUNDS TO PREVENT ACCIDENTAL RECONNECTION

487	For 120 - 140 volt plugs
488	For 240 - 550 volt plugs

#### NYLON LOCKOUT SACK - FOR OVERSIZED PLUGS - REMOTE CONTROL ELECTRICAL CONNECTIONS

453L	Lockout sack 158mm x 431mm
453XL	Lockout sack 254mm x 660mm
453XXL	Lockout sack 356mm x 914mm

#### GROUP LOCKOUT BOX - IDEAL FOR SHIFT WORK WITH STAGGERED HOURS

498A	235 x 152 x 95 (12 padlock holes)
503 Red	Wall mounted or portable
KS1LO	155 x 155 x 65 - Operated with 1 lock. 12 padlock holes
KS5LO	255 x 155 x 65 - Operated with 5 locks. 12 padlock holes

#### CABLE LOCKOUTS - CAN LOCKOUT UP TO 4 PADLOCKS

For simultaneous lockout of multiple valves and circuit breakers

806	Adjustable cable - 1830mm
-----	---------------------------

# KeySecure

## SAFETY LOCKOUT PRODUCTS

### GROUP LOCKOUT STATIONS

Safety Lockout Centres and Stations are designed to hold lockout products in a central location making access to isolating equipment easy. They come with a translucent padlockable cover and bold headings that act as a further and constant reminder to all personnel to lockout before commencing work.



1482BP-410



1483BP-410



1484BP-3RED

1482BP-E	Lockout Station (empty)
1482BP-3Red	Lockout Station complete with 4 x 3Red, 2 x 420 and 12 x 497A
1482BP-410	Lockout Station complete with 4 x 410Red, 2 x 420 and 12 x 497A
1483BP-E	Lockout Station (empty)
1483BP-3Red	Lockout Station complete with 10 x 3Red, 2 x 420 and 24 x 497A
1483BP-410	Lockout Station complete with 10 x 410Red, 2 x 420 and 24 x 497A
1484BP-E	Lockout Station (empty)
1484BP-3Red	Lockout Station complete with 20 x 3Red, 4 x 420 and 48 x 497A
1484BP-410	Lockout Station complete with 20 x 410Red, 4 x 420 and 48 x 497A

#### Components for above

3Red	38mm Laminated Body, 19mm shackle clearance, 7mm shackle diameter
410Red	38mm zenex body, 44mm body height, 38mm steel shackle
420	25 diameter lockout jaws for 6 padlocks
497A	"DO NOT OPERATE" pack of 12 lockout tags, 11mm diameter brass grommet for all types of lockout padlocks



KS25 PADLOCK VIEW



KSE25 PADLOCK



KSE25 MD



KSE500 PA

### PADLOCK LOCKOUT SECURITY CABINETS

designed to meet requirements of the Machine Industry where a higher degree of security is required.

KSE25P	25 Padlock or Bunches	350mm (H)	x	380mm (W)	x	140mm (D)	13kgs
KSE50P	50 Padlock or Bunches	550mm	x	380mm	x	140mm	20kgs
KSE100P	100 Padlock or Bunches	550mm	x	730mm	x	140mm	45kgs
KSE300P	300 Padlock or Bunches	1300mm	x	730mm	x	250mm	110kgs
KSE400P	400 Padlock or Bunches	1300mm	x	730mm	x	250mm	110kgs
KSE500P	500 Padlock or Bunches	1300mm	x	730mm	x	250mm	130kgs
KS15P VIEW	15 Padlocks or Bunches	350mm	x	380mm	x	80mm	5kgs
KS20P VIEW	20 Padlocks or Bunches	450mm	x	380mm	x	80mm	6kgs
KS25P VIEW	25 Padlocks or Bunches	550mm	x	380mm	x	80mm	8kgs
KS1LO	1 Key Lock, 12 padlock holes	155mm	x	155mm	x	65mm	2kgs
KS5LO	5 Key Lock, 12 padlock holes	255mm	x	155mm	x	65mm	3kgs

# KeySecure

## NOTES

# KeySecure



**DKM Tools**

**Energieweg 47**

**4906 CG**

**Oosterhout**

**The Netherlands**

**Telephone: +31 (0) 168 357755**

**Email: [sales@dkmtools.nl](mailto:sales@dkmtools.nl)**

**Website: [www.dkmtools.nl](http://www.dkmtools.nl)**